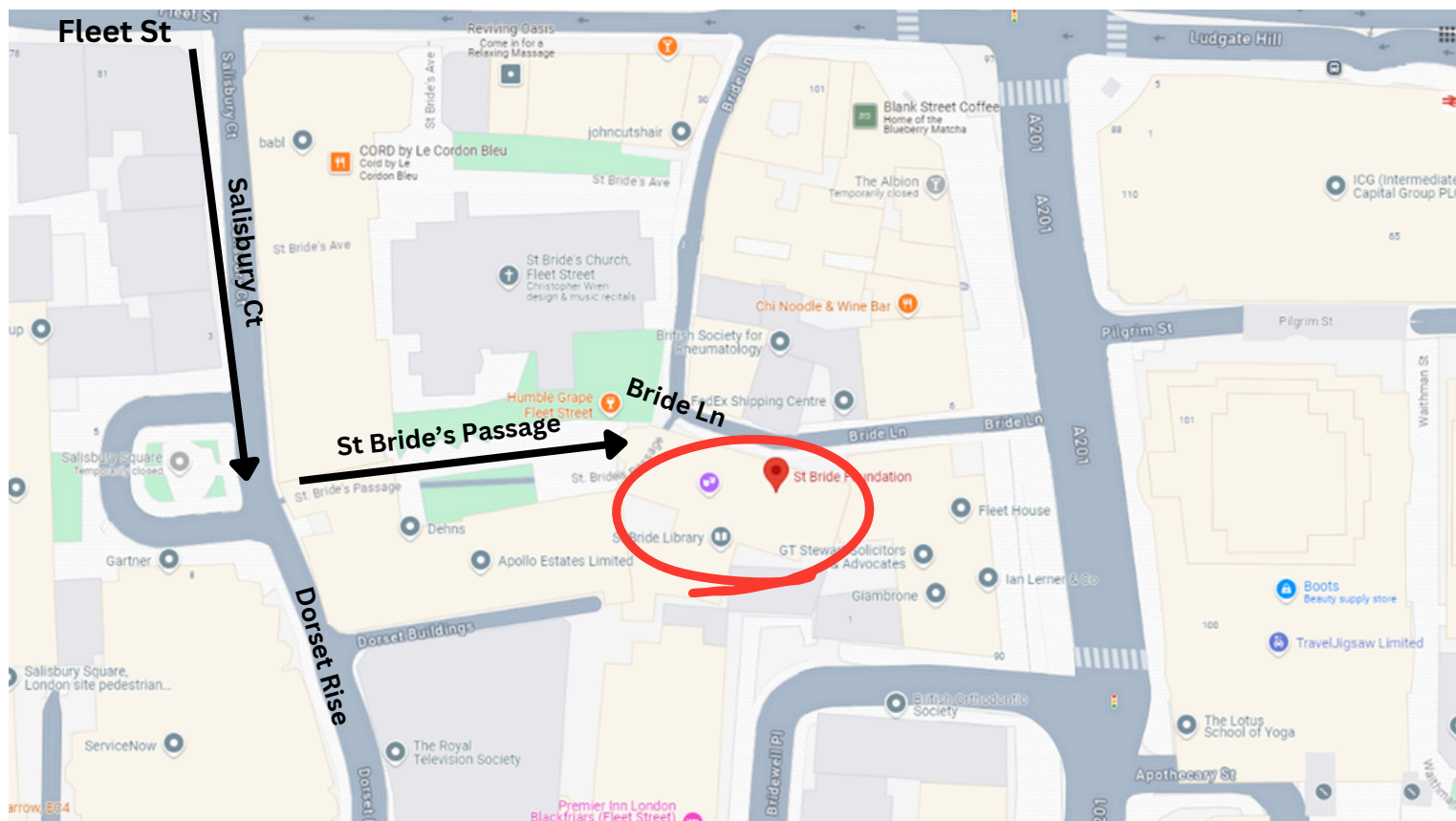


Accessibility to

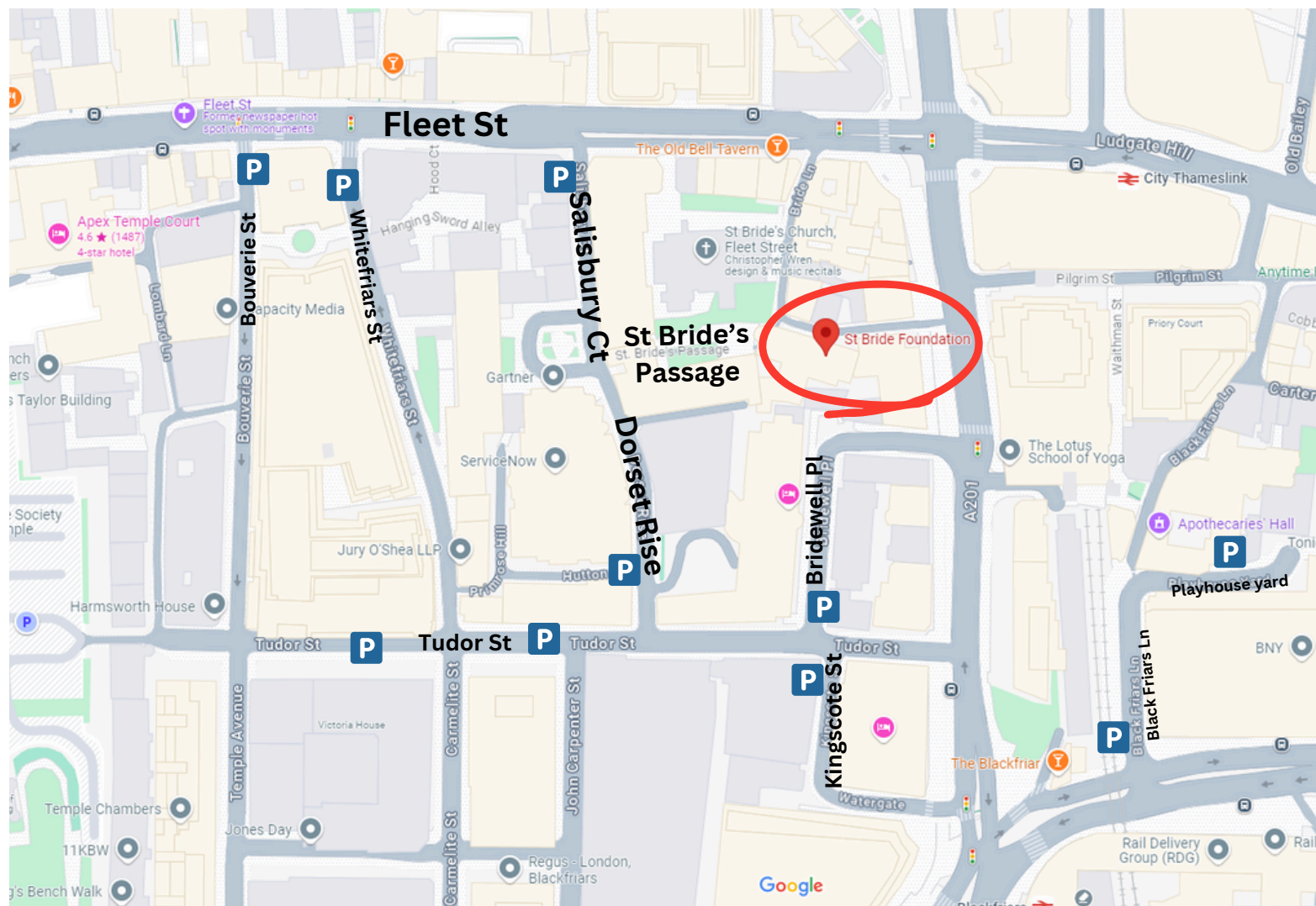
St Bride Foundation



For Step free access to St Bride Foundation, walk down Salisbury Court, off of Fleet Street. The main entrance can be found after passing through St Bride's Passage, which is a short walk from Salisbury Court/ Dorset Rise.

Step free access to the Bridewell Theatre is available from Bride Lane over a threshold stone with a riser height ranging between 110-150mm from right to left. Access from the threshold to the auditorium is via a stairlift (230Kg weight load) and to the theatre bar and lavatories via a platform lift (340kg weight load). We have ramps to enable this. Step Free access to the Foundation via the workshop entrance on Bride Lane is unavailable.

Blue Badge Bays near St Bride Foundation



Blue P marks indicate Blue Badge Parking Bays according to the City of London Website.

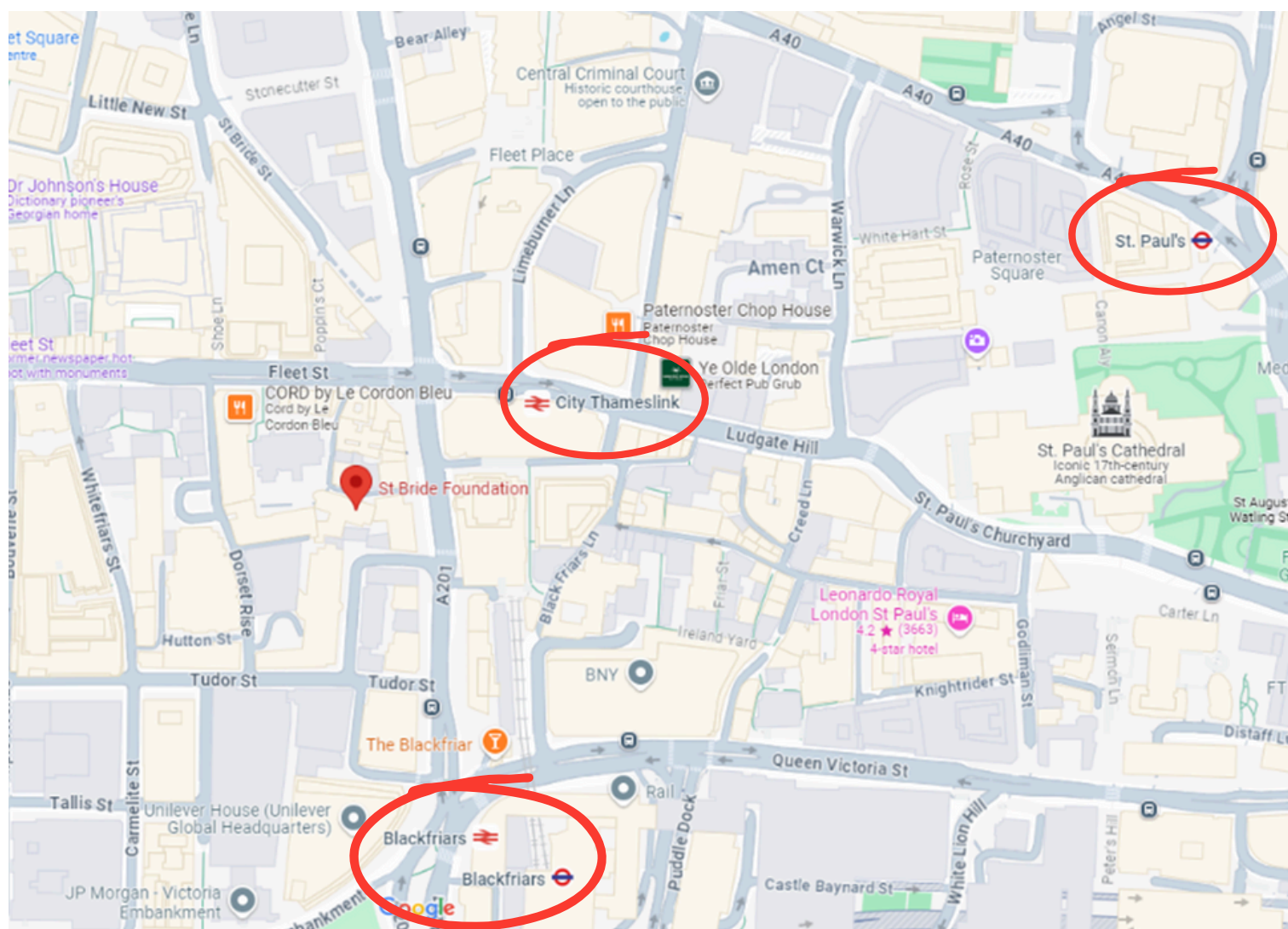
The closet Blue Badge parking near the main entrance of St Bride Foundation, can be located in Salisbury Court (Opposite Greenwood House) and Along Dorset Rise.

For a full list of Blue Badge parking bays in London please click on the link below or copy and paste into your web browser: <http://www.cityoflondon.gov.uk/services/transport-and-streets/parking/where-to-park/Pages/Disabled-bay-map.aspx>

Alternatively check here: <http://www.parkingforbluebadges.com/bluebadgemap/online-map>

Try parkopedia for further information and prices: <http://en.parkopedia.co.uk/>

By Tube/ Train



If you are travelling by tube or train, the closest stations can be found on the map above. Blackfriars underground station and City Thameslink both have lift access to street level.

For more information regarding accessibility/mobility at Blackfriars Station check here:

http://www.nationalrail.co.uk/stations_destinations/bfr.aspx

For information regarding accessibility/mobility at City Thames Link check here:

http://www.nationalrail.co.uk/stations_destinations/ctk.aspx

Accessibility Information

Total number of steps leading up to Passmore Edwards room: 24

Total number of steps leading up to the main entrance of St Bride Foundation via Humble Grape/ Bride Lane: 25

Total number of steps to female facilities: 19

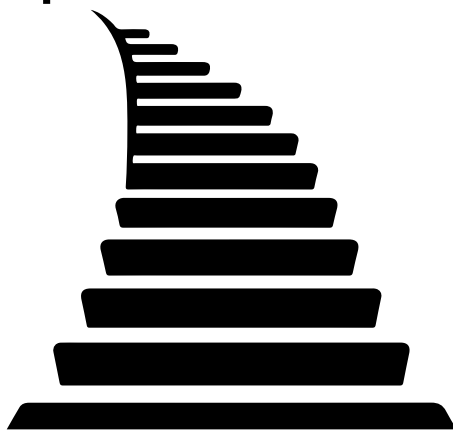
Total number of steps to male toilets via reception/ via workshop: 7/12

Total number of steps from the theatre/ bar/ foundry to workshop: 22

Total number of steps from Leyton entrance via Bride Lane to the workshop: 9

Total number of steps from the workshop to reception area: 19

**Total number of steps from reception to library: 12
(Stairlift platform available)**



Pictures of Accessibility



Stairlift platform (250kg weight load) from reception floor to library

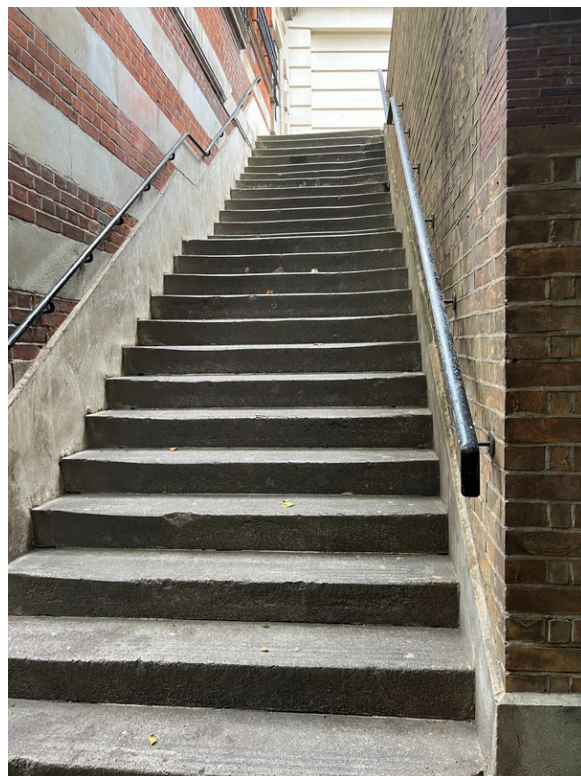


Stairlift platform (230kg weight load) from theatre entrance to theatre floor



Stairlift platform (340kg weight load) from theatre floor to theatre bar/ foundry/ toilets

Pictures



**Steps (near Humble Grape) via Bride Lane
to the main entrance of St Bride Foundation**



**Steps leading up to Passmore Edwards room
(No stairlift platform access available)**